

▲ READ ALL INSTRUCTIONS CAREFULLY BEFORE USE

Once assembled, the e-Tint® motorcycle visor insert is intended to be permanent. You may not reposition the insert once it is mounted to your helmet faceshield. Please read and follow all assembly instructions carefully. To view a video of these instructions, visit www.e-tintproducts.com. There you may also download a digital version of these instructions.

INSTALLATION INSTRUCTIONS

1. Choose a dry and dust free place for installation. Remove the faceshield from your helmet. Thoroughly clean and dry the inside of the faceshield per manufacturer's instructions, or with a mild detergent and water. Remove all fingerprints, grease residues, dirt, and moisture.

2. Reinstall the faceshield to your helmet. **Do not touch the inside of the faceshield or the inside surface of the visor while installing it, as both must remain free of fingerprints.**

3. Remove the vinyl installation template. With your helmet faceshield down and fully closed, center the installation template on the outside surface of the faceshield. Align the installation template within the perimeter of the helmet portal so that it fits within the opening. **(Diagram 1)** ▲ *If the vinyl installation template does not fit within the perimeter of your faceshield, please stop the installation process and call 1-877-451-5937 for customer support.*

4. Leaving the vinyl installation template in place, remove the faceshield from the helmet. Set it face down on a soft, clean surface. **(Diagram 2)**

5. **Do not touch the inside surface of the insert and faceshield, as any smudges or fingerprints on these surfaces will not be removable after installation.** Carefully pull away the liner from the perimeter adhesive of your e-Tint® motorcycle visor insert. **(Diagram 3)**

6. Hold the visor insert by its outer edges and gently bend into a "U" shape. Align the crosshairs of the visor insert with the vinyl installation template. **(Diagram 4)**

7. When correctly positioned, gently apply the visor insert to your faceshield. Mount the visor insert by applying firm pressure along the adhesive gasket, moving from the center outwards **(Diagram 5)**. A small airspace between the interior surfaces of the faceshield and insert will be expected. **NOTE: Avoid repositioning the insert after making contact with the faceshield; this will reduce the performance of the adhesive.**

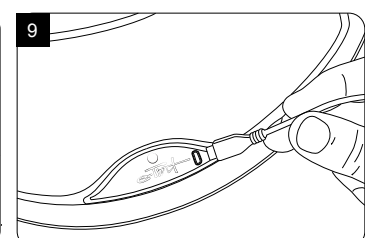
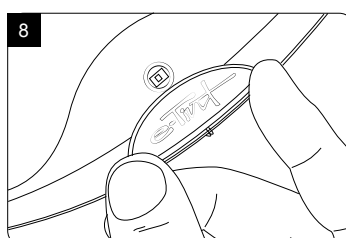
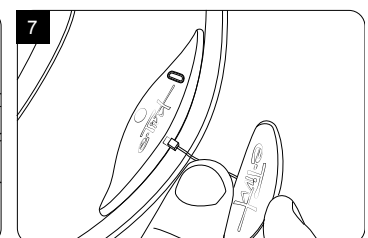
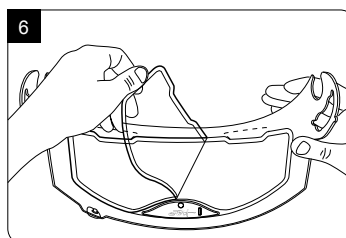
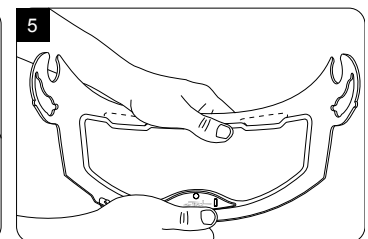
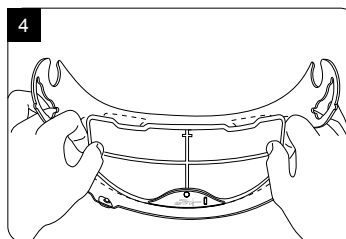
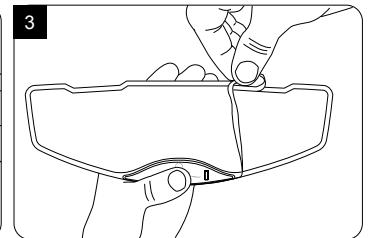
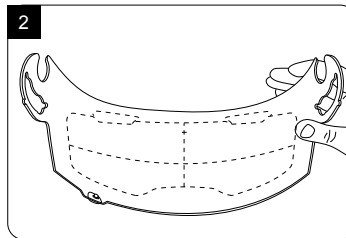
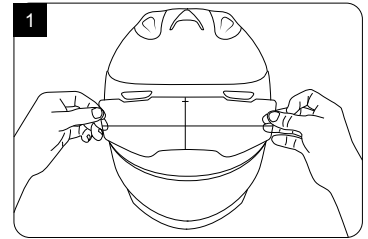
8. Carefully remove the installation template from the back surface of the motorcycle visor insert and discard. **(Diagram 6)** Remove the vinyl installation template from the outside of the faceshield and discard.

9. To connect the small outer button, plug the wire into the base of the AX-10 ARAI electronics. **(Diagram 7)**

10. Remove the liner from the back of the outer button. Wrap the wires under the bottom of the faceshield and mount the outer button to the front of the visor. **NOTE: Make sure the outer button does not cover the light sensor of the insert; this will disable the automatic function of the insert.** **(Diagram 8)**

11. Allow the adhesive of the visor insert to set for one (1) hour before reinstalling the faceshield to your helmet. (While the adhesive sets, you may charge the electronic driver by using the supplied micro USB. The visor will stop flashing when fully charged). **(Diagram 9)**

12. Reinstall the faceshield to your helmet. Before riding, test the visor insert to make sure the light threshold is set to your desired comfort level. See "Directions of Use" below to set custom light threshold.



DIRECTIONS OF USE

The AX-10 ARAI e-Tint® visor insert may operate manually or in automatic mode. The insert comes programmed with a standard light threshold setting. You have the option to set a custom light threshold so the visor may automatically change tint in any desired lighting condition.

TO OPERATE IN MANUAL MODE: Simply press and release either button to activate or deactivate the tint of the insert.

TO OPERATE IN AUTOMATIC MODE: Press and hold either button for approximately three (3) seconds. The visor will flash three (3) times to indicate it has now switched to automatic mode. Release the button. The visor is now set for automatic use.

TO ADJUST THE LIGHT THRESHOLD: First, set the visor to automatic mode. Hold the visor in your desired lighting condition (choose an average light where you will be riding with it) and press and hold either button for approximately six (6) seconds. The visor will flash three (3) times to indicate that the threshold has been adjusted. The electronics will store the custom threshold until it is either changed or reset to its factory setting.

NOTE: Be sure to keep the area around the photo sensor (on the front of the visor) clear and open to the light source. If your finger is covering the light sensor while setting the light threshold, it will result in an insert that is activated most of the time and only switching when it is very dark. Do NOT attempt to change the light threshold when moving.

FOR A FACTORY RESET: Press and hold either button for approximately twelve (12) seconds. Visor will flash three (3) times, twice in succession (total of 6 times), to indicate the factory reset.

TO CHARGE: Connect the micro USB cable into the electronic driver and charge from either a computer or wall adapter. During charging, the insert will continually flash on and off. When insert is fully charged, flashing will stop. It is recommended to completely charge before each use. A fully charged insert may have up to sixty (60) hours of use.